



Artists Impression.



Symphony

COLLECTION

Everley
SUNBURY





The Symphony Collection

at Everley.

Nestled in the heart of Sunbury, close to Craiglee Vineyard, Goona Warra Vineyard and Mount Holden, the Symphony Collection features residences by Sienna Homes, in a location where you can relax, unwind, and enjoy the enchanting melody of nature's grand symphony.

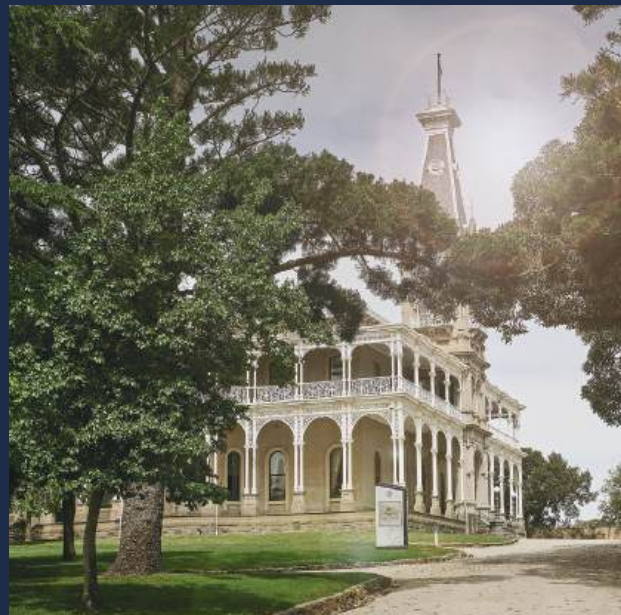




Embrace unparalleled modern living

in a town filled with
old world charm.

Nestled along Jacksons Creek, Everley holds an esteemed position as the closest new estate to the historic town centre of Sunbury. Its unique location straddles the old town's charm and the vibrant new retail precinct, offering an unparalleled living experience. As Sunbury's population expands, Everley's centrality will only increase, cementing its status as Sunbury's best new location.



A photograph of a vineyard. In the foreground, a weathered wooden post stands vertically, with a white rectangular label wrapped around it that has the number '16' written in green. The post is part of a wire fence. Behind the post, there are rows of grapevines with yellowing leaves, suggesting autumn. The background is filled with more trees and foliage, slightly out of focus.

Start a new
life in one
of Melbourne's
fastest growing
communities.



Everything you could want right at your fingertips.

Come home to a community surrounded by an unrivalled connection to the natural world. Everley spans 4.5 kilometres along the majestic Jacksons Creek, encompasses over 88 hectares of sprawling open space, and is adorned with a network of picturesque bike and walking trails, scenic vantage points, sporting amenities, cascading waterfalls, and serene wetlands.

Everley is also surrounded by amenities to help you unwind. The renowned Goonawarra Golf Club is just across the road, while two stunning vineyards, Craiglee and Goona Warra, are a short stroll down the hill.

On top of this, Symphony residents will soon enjoy a range of accessible, premium culinary delights, tantalising beverages, and entertainment options within the upcoming retail space, coupled with quality education facilities close-by.





Good design is not a luxury

Founded in 2007 by seasoned industry experts, Sienna Homes has redefined home living with their visionary approach to design. Celebrated for their innovative and thoughtfully crafted spaces, they have forged a reputation for seamlessly merging modern aesthetics with exceptional functionality.

With an unwavering belief that great design is a right, not a luxury, Sienna Homes creates residences that are both comfortable and spacious. Their award-winning team has been recognised with 13 prestigious industry accolades, including four HIA Affordable Housing Awards, reflecting their commitment to excellence and outstanding value in the housing market.



Artists Impression.

Award winning townhouse builder





Sunbury's best value homes.

Experience the pinnacle of refined townhome living with Sienna Homes, renowned for their award-winning designs that seamlessly blend modern aesthetics with exceptional functionality.

Each residence is adorned with premium inclusions from esteemed brands such as Polytec, Daikin, and Franke.

Meticulously crafted layouts ensure an abundance of natural light and generous space, enriching every aspect of daily life. These townhomes embody a sophisticated fusion of style and practicality, providing an elegant sanctuary that complements your lifestyle.

Founded in 2007 by seasoned industry experts, Sienna Homes has redefined home living with their visionary approach to design. Celebrated for their innovative and thoughtfully crafted spaces, they have forged a reputation for seamlessly merging modern aesthetics with exceptional functionality.

With an unwavering belief that great design is a right, not a luxury, Sienna Homes creates residences that are both comfortable and spacious. Their award-winning team has been recognised with 13 prestigious industry accolades, including four HIA Affordable Housing Awards, reflecting their commitment to excellence and outstanding value in the housing market.



Artists Impression.

Each home seamlessly blends modern aesthetics with exceptional functionality.



Roesler Drive

Juwel Road

Touriga Circuit

The Tilbury Cnr – Lot 6205
238m²

The Tilbury – Lot 6206
171m²

The Tilbury – Lot 6207
171m²

The Tilbury – Lot 6208
171m²

The Tilbury – Lot 6209
171m²

The Tilbury Cnr – Lot 6210
237m²

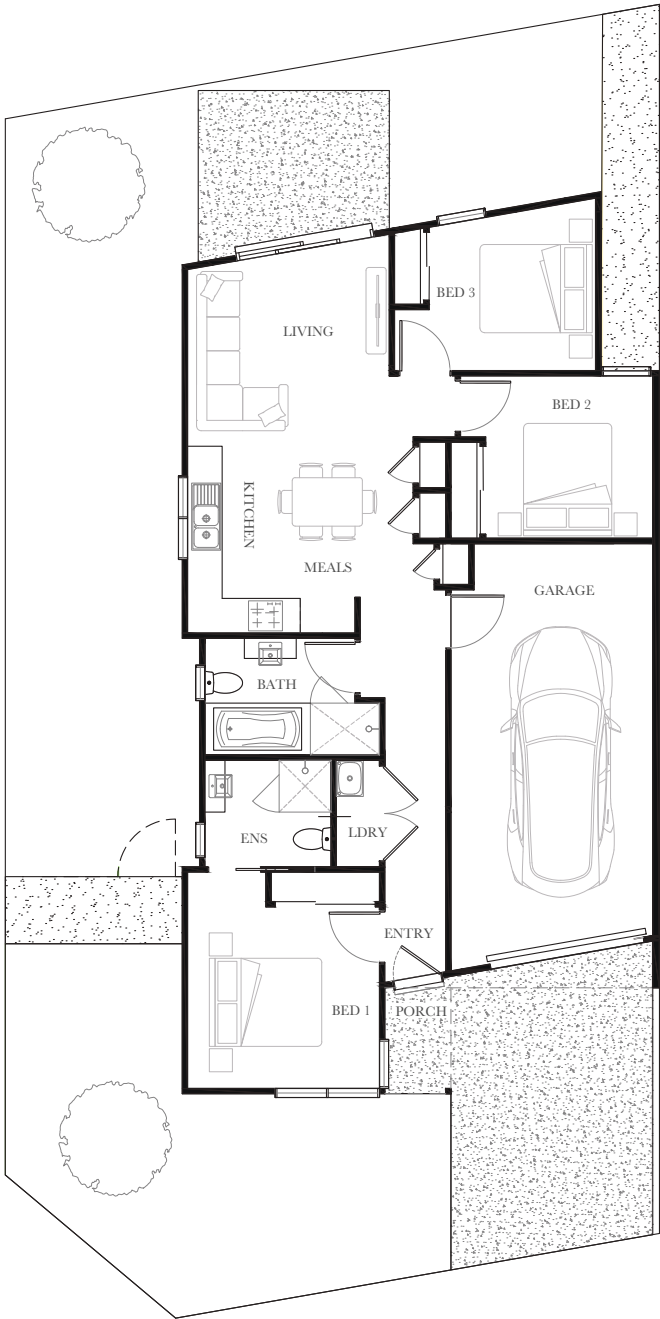
Artist's Impression.

This brochure is intended to provide general information only and does not constitute an offer to supply. Sienna Homes reserves the right to substitute a product with an equivalent product due to supply issues, agreements or availability. All photographs, plans, maps, and drawings are illustrative only, may show upgrade items and may not be to scale. Lot size dimensions, easements, landscape treatments, final road layout, public utility and service infrastructure locations and zoning are subject to change and conditional on authority approval.

Prospective buyers should make and rely on their own enquiries, refer to their contract for full terms and conditions, and obtain independent advice including legal and financial advice. CDB-U 49207

Lot 6205

The Tilbury Cnr Floorplan



Site Area	238m ²	
Ground Floor Living	84.1m ²	9.1sq
Porch	2.2m ²	0.2sq
Garage	25.7m ²	2.8sq
Total Area	112m²	12.1sq

This plan and information is indicative only and may vary without notice. Furniture or vehicles are not included in the sale of the lot. The image depicted here is indicative only. Facade finishes and colours may vary.



Lot 6205

Lot 6206

The Tilbury Floorplan



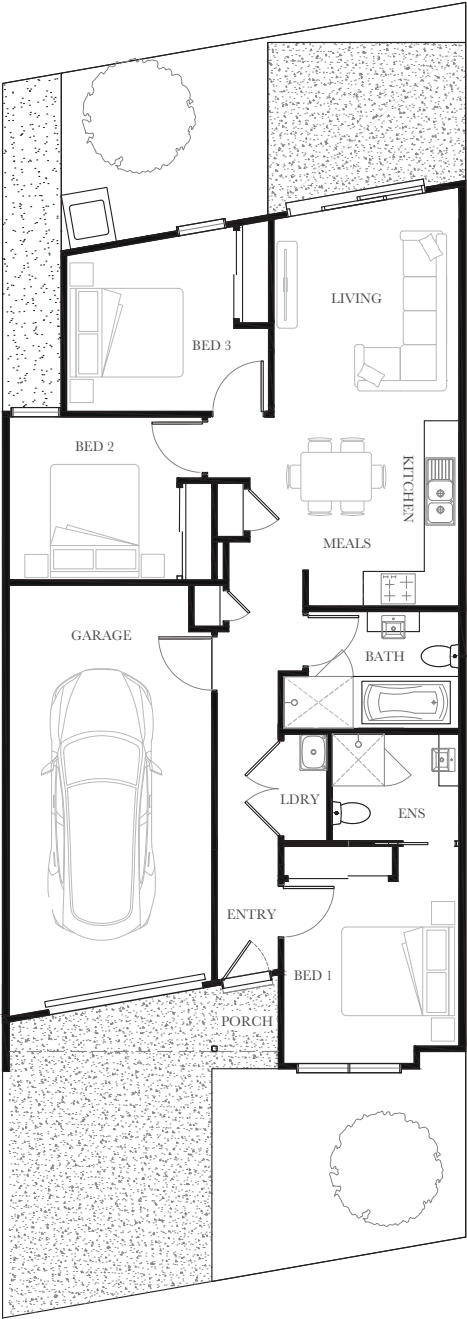
3



2



1



Site Area	171m ²	
Ground Floor Living	82.5m ²	8.9sq
Porch	1.4m ²	0.15sq
Garage	25.9m ²	2.8sq
Total Area	109.8m²	11.8sq

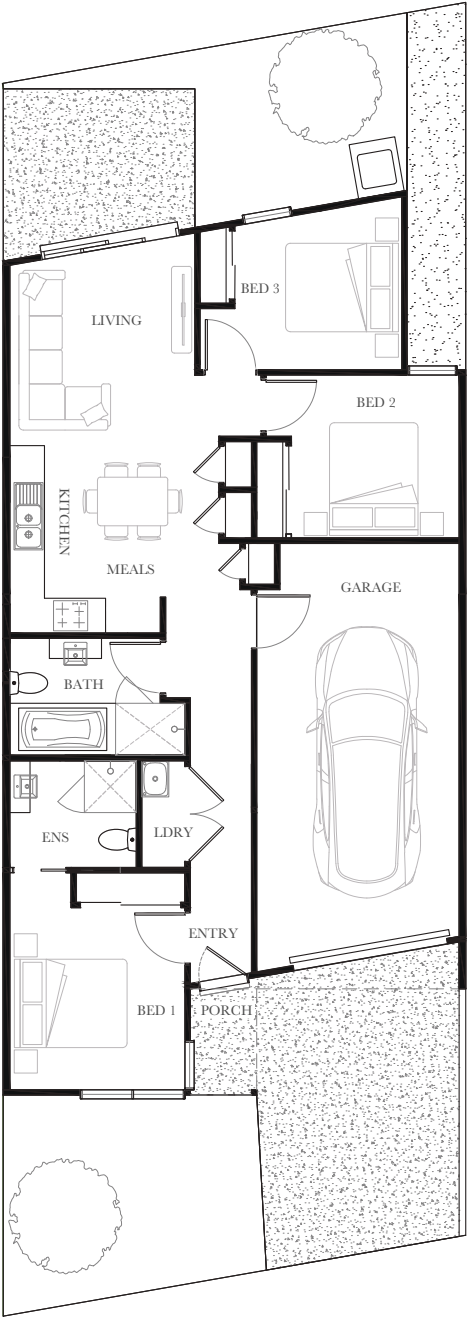
This plan and information is indicative only and may vary without notice. Furniture or vehicles are not included in the sale of the lot. The image depicted here is indicative only. Facade finishes and colours may vary.



Lot 6206

Lot 6207

The Tilbury Floorplan



Site Area	171m ²	
Ground Floor Living	81.3m ²	8.8sq
Porch	2.2m ²	0.2sq
Garage	25.7m ²	2.8sq
Total Area	109.2m²	11.8sq

This plan and information is indicative only and may vary without notice. Furniture or vehicles are not included in the sale of the lot. The image depicted here is indicative only. Facade finishes and colours may vary.



Lot 6207

Lot 6208

The Tilbury Floorplan



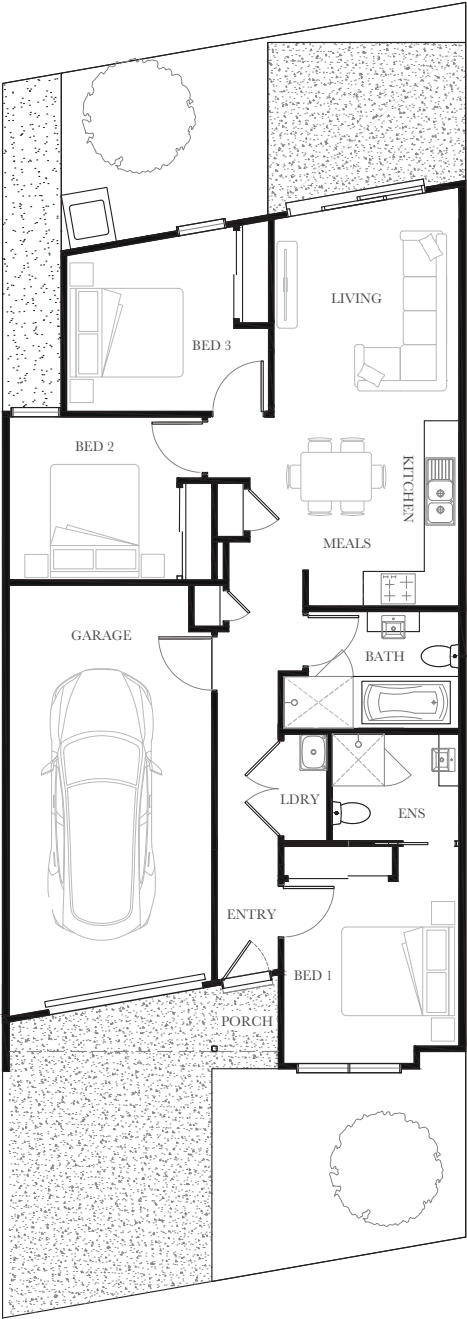
3



2



1



Site Area	171m ²	
Ground Floor Living	82.5m ²	8.9sq
Porch	1.4m ²	0.15sq
Garage	25.9m ²	2.8sq
Total Area	109.8m²	11.8sq

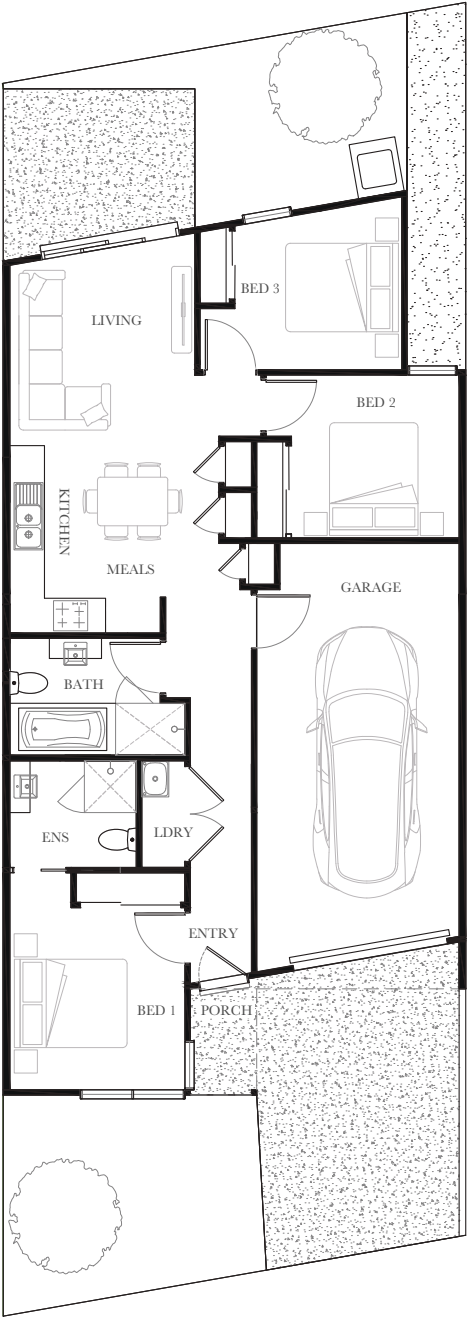
This plan and information is indicative only and may vary without notice. Furniture or vehicles are not included in the sale of the lot. The image depicted here is indicative only. Facade finishes and colours may vary.



Lot 6208

Lot 6209

The Tilbury Floorplan



Site Area	171m ²	
Ground Floor Living	81.3m ²	8.8sq
Porch	2.2m ²	0.2sq
Garage	25.7m ²	2.8sq
Total Area	109.2m²	11.8sq

This plan and information is indicative only and may vary without notice. Furniture or vehicles are not included in the sale of the lot. The image depicted here is indicative only. Facade finishes and colours may vary.



Artists Impression.

Lot 6209

Lot 6210

The Tilbury Cnr Floorplan



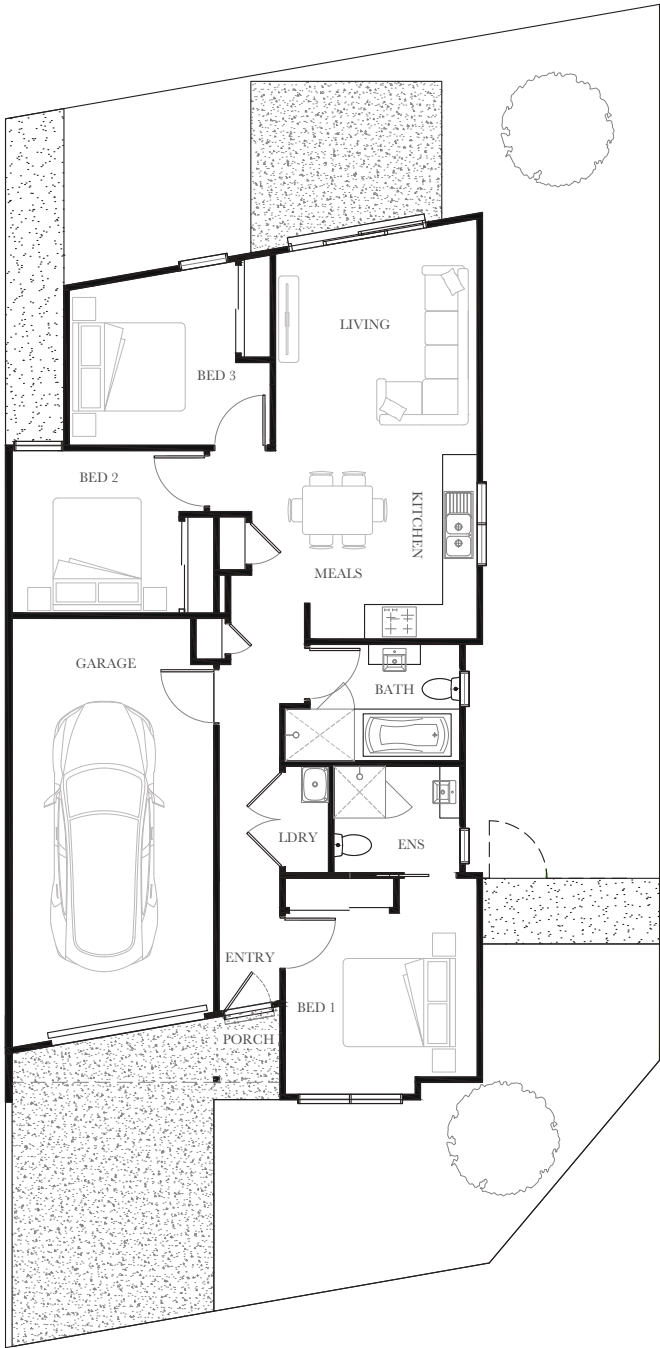
3



2



1



Site Area	237m ²	
Ground Floor Living	85.5m ²	8.88sq
Porch	1.4m ²	0.15sq
Garage	25.9m ²	2.8sq
Total Area	112.8m²	12.1sq

This plan and information is indicative only and may vary without notice. Furniture or vehicles are not included in the sale of the lot. The image depicted here is indicative only. Facade finishes and colours may vary.



Lot 6210

Finishes

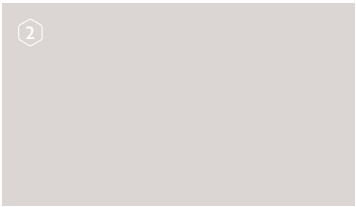
Urban Colour Scheme



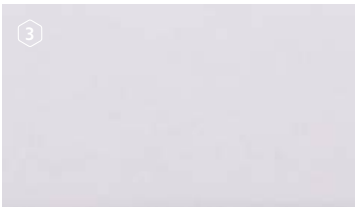
Upgrades shown



Benchtops
Supplier: Stone Ambassador
Colour: Mink Grey (ES)
Material: Zero stone
Location: Kitchen



Cabinetry
Supplier: Polytec
Colour: Oyster Grey
Material: Matt laminate
Location: Kitchen



Wall Tiling
Supplier: National Tiles
Colour: Café Cool Grey
Material: Ceramic tile 100 x 300mm
Location: Kitchen splashback



Flooring
Supplier: Choices Flooring
Colour: Old Oak Grey Brushed
Material: Clix Timber laminate
Location: Entry, kitchen, dining and main living area



Flooring
Supplier: Choices Flooring
Colour: Haven Delta Twist Shingle 010
Material: Carpet
Location: Bedrooms and secondary living areas



Benchtops

Supplier: Polytec
 Colour: Concrete Fabrini
 Material: Matt laminate
 Location: Wet areas including powder rooms, bathrooms, ensuites and laundry



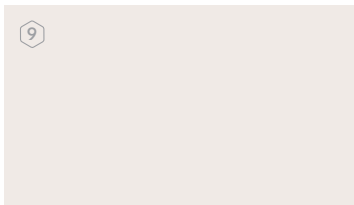
Cabinetry

Supplier: Polytec
 Colour: Maison Oak
 Material: Matt laminate
 Location: Wet areas including powder rooms, bathrooms, ensuites and laundry



Wall Tiling

Supplier: National Tiles
 Colour: Regina Matte Grey
 Material: Ceramic tile 450 x 450mm
 Location: Wet areas



Paint

Supplier: Wattyl
 Colour: Powder White
 Material: Low sheen paint
 Location: Internal plaster walls



Flooring

Supplier: National Tiles
 Colour: Regina Matte Grey
 Material: Ceramic tile 450 x 450mm
 Location: Wet areas

Finishes

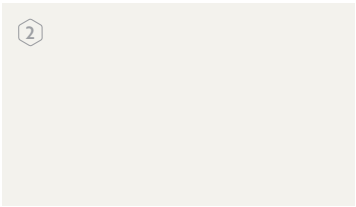
Scandi Colour Scheme



Upgrades shown



Benchtops
 Supplier: Stone Ambassador
 Colour: White Burst (ES)
 Material: Zero stone
 Location: Kitchen



Cabinetry
 Supplier: Polytec
 Colour: Blossom White
 Material: Matt laminate
 Location: Kitchen



Wall Tiling
 Supplier: National Tiles
 Colour: White Matt
 Material: Ceramic tile 100 x 300mm
 Location: Kitchen splashback



Flooring
 Supplier: Choices Flooring
 Colour: Classic White Oak
 Material: Clix Timber laminate
 Location: Entry, kitchen, dining and main living area



Flooring
 Supplier: Choices Flooring
 Colour: Haven Delta Twist Mercury Storm 008
 Material: Carpet
 Location: Bedrooms and secondary living areas



Benchtops

Supplier: Polytec
 Colour: Argento Stone
 Material: Matt laminate
 Location: Wet areas including powder rooms, bathrooms, ensuites and laundry



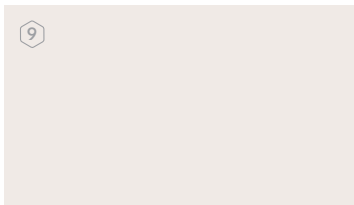
Cabinetry

Supplier: Polytec
 Colour: Natural Oak
 Material: Matt laminate
 Location: Wet areas including powder rooms, bathrooms, ensuites and laundry



Wall Tiling

Supplier: National Tiles
 Colour: Regina Matt White
 Material: Ceramic tile 450 x 450mm
 Location: Wet areas



Paint

Supplier: Wattyl
 Colour: Powder White
 Material: Low sheen paint
 Location: Internal plaster walls



Flooring

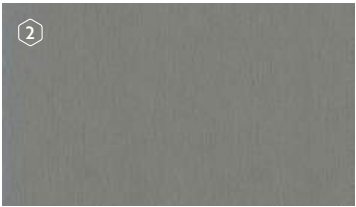
Supplier: National Tiles
 Colour: Regina Matt White
 Material: Ceramic tile 450 x 450mm
 Location: Wet areas

Finishes

Classic Colour Scheme



Benchtops
 Supplier: Stone Ambassador
 Colour: White Burst (ES)
 Material: Zero stone
 Location: Kitchen



Cabinetry
 Supplier: Polytec
 Colour: Titanium
 Material: Matt laminate
 Location: Kitchen



Wall Tiling
 Supplier: National Tiles
 Colour: White Matt
 Material: Ceramic tile 100 x 300mm
 Location: Kitchen splashback



Flooring
 Supplier: Choices Flooring
 Colour: Old Oak Grey Brushed
 Material: Clix Timber laminate
 Location: Entry, kitchen, dining and main living area

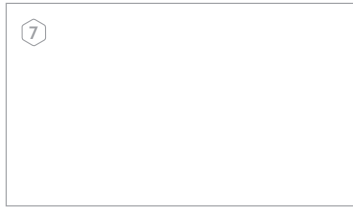


Flooring
 Supplier: Choices Flooring
 Colour: Haven Delta Twist
 Material: Steel Magnet 005
 Material: Carpet
 Location: Bedrooms and secondary living areas



Benchtops

Supplier: Polytec
 Colour: Temple Stone
 Material: Matt laminate
 Location: Wet areas including powder rooms, bathrooms, ensuites and laundry



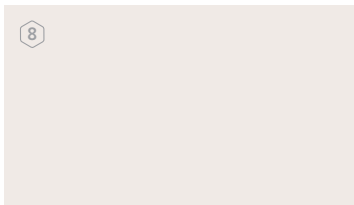
Cabinetry

Supplier: Polytec
 Colour: Classic White
 Material: Matt laminate
 Location: Wet areas including powder rooms, bathrooms, ensuites and laundry



Wall Tiling

Supplier: National Tiles
 Colour: Regina Matt Grey
 Material: Ceramic tile 450 x 450mm
 Location: Wet areas



Paint

Supplier: Watty
 Colour: Powder White
 Material: Low sheen paint
 Location: Internal plaster walls



Flooring

Supplier: National Tiles
 Colour: Regina Matt Grey
 Material: Ceramic tile 450 x 450mm
 Location: Wet areas

Finishes

Chalet Colour Scheme



Upgrades shown



Benchtops
Supplier: Stone Ambassador
Colour: Savannah (E)
Material: Zero stone
Location: Kitchen



Cabinetry
Supplier: Polytec
Colour: Greige
Material: Matt laminate
Location: Kitchen



Wall Tiling
Supplier: National Tiles
Colour: City Edge Vanilla Matt
Material: Ceramic tile 75 x 300mm
Location: Kitchen splashback



Flooring
Supplier: Choices Flooring
Colour: Ginger Oak
Material: Clix Timber laminate
Location: Entry, kitchen, dining and main living area



Flooring
Supplier: Choices Flooring
Colour: Haven Delta Twist Aged Stone 003
Material: Carpet
Location: Bedrooms and secondary living areas



Benchtops

Supplier: Polytec
 Colour: Greige
 Material: Matt laminate
 Location: Wet areas including powder rooms, bathrooms, ensuites and laundry



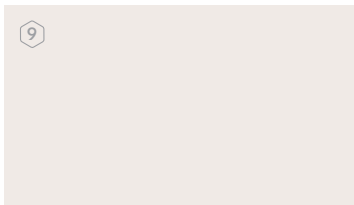
Cabinetry

Supplier: Polytec
 Colour: Nataio Walnut Wood
 Material: Matt laminate
 Location: Wet areas including powder rooms, bathrooms, ensuites and laundry



Wall Tiling

Supplier: National Tiles
 Colour: Como Matt White
 Material: Ceramic tile 450 x 450mm
 Location: Wet areas



Paint

Supplier: Wattyl
 Colour: Powder White
 Material: Low sheen paint
 Location: Internal plaster walls



Flooring

Supplier: National Tiles
 Colour: Como Matt White
 Material: Ceramic tile 450 x 450mm
 Location: Wet areas

Inclusions

Kitchen & Laundry

Fisher & Paykel OB60SC7LEB1 600mm multifunction electric oven.

Fisher & Paykel CI604CTPB1 600mm 4 zone electric induction cooktop.

Haier HPH60ILX2 500mm stainless steel undermount rangehood (ducted to outside air).

Fisher & Paykel DW60FC1B2 600mm dishwasher in dark finish.

Franke Spark SKX621 inset stainless steel kitchen sink.

Alder Soho kitchen sink mixer – chrome.

Zero crystalline silica engineered stone benchtops with 40mm edge to the kitchen.

Laminated finish kitchen base & overhead cupboard doors/panels. Base cabinet handles from the category 1 range, overhang fingerpulls to overheads. Soft close door & drawer hardware.

Wall tiles to the kitchen splashback.

Combination stainless steel 45ltr trough & white powdercoated steel cabinet to the laundry.

Alder Classico sink mixer to laundry trough & mini washing machine stops – chrome.



Internal

2550mm single storey ceiling heights.

Hume flush panel internal passage doors – 2040mm high.

Vinyl sliding robe doors – 2100mm high.

Linen with 4No fixed shelves (product specific).

Robes white melamine finish 1No fixed shelf & single chrome hanging rod.

Gainsborough Contractor 700 series internal hinged passage door lever handles – Lianna.

65mm x 18mm single bevelled MDF architraves & skirtings (tiled skirtings to wet areas).

Wall tiles to wet areas.

Timber laminate floating flooring (with perimeter beading) selected from the category 1 range to entry, ground floor hallway, kitchen, dining & living.

Floor tiles to wet area.

Carpet to balance of floor areas.

Wet Areas

Clark square 400 vanity basins - white.

Stylus Origin rimless toilet suite with soft close acrylic seat – white.

Stylus Origin 1500mm back to wall freestanding corner bath.

Alder Soho basin mixers, wall bath mixer w/– straight outlet & shower mixers.

Alder designer shower rail w/– HS305 hand shower (98535) to showers.

Alder Wish bathroom accessories including toilet roll holders, double towel rails or robe hooks to showers & towel holder to powder rooms. Note: Robe hooks to be provided if insufficient wall space is available for installation of towel rail.

Vanity units with laminate finish benchtop, cupboard doors, panels, and handles selected from the builders range.

Polished edge mirrors above vanities.

Tiled showerbases with approx 1950mm high clear glazed semi-framed showerscreen & semi frameless pivot door (silver trims). Excludes bathroom on designs with shower over bathtub.

Electrical, Heating & Cooling

Daikin reverse cycle split system air conditioner to the main living area. Size of unit & the position of the indoor head unit & external condenser are to be determined by the builder & the builders installer in accordance with the manufacturers recommendations & structural limitations.

Rinnai PEPH wall mounted electric panel heaters with manual thermostats to bedrooms & secondary living areas.

Emerald energy EE-HWS-A1-270 all-in-one electric heat pump hot water service with 270L storage tank.

LED downlights throughout all house internal rooms & external ceilings.

LED 1200mm blade batten light to the garage.

Ample single & double power points throughout.

Double para flood light with motion sensor to rear yard.

2No free to air television points & 1No telephone point.

Free to air television antenna connected to television points (Note: Client responsible for signal booster due to location if required).

Hardwired smoke detectors.

Ceiling exhaust fans to bathroom, ensuite & other wet areas that do not have external ventilation.

External General

Fixed external colour schemes prepared by our professional Interior Designer.

Combination of masonry cladding, acrylic render & cement sheet cladding with painted finish (design specific refer to drawings & colour schedules).

Roofing

Colorbond cappings, flashings, fascia, quad gutter, rainheads & rectangular downpipes.

Colorbond metal roofing including sarking.



Windows, Sliding Doors & Insulation

Powder coated aluminium double clear glazed awning windows (excluding entry door sidelights). Including keyed locks to all openable windows.

Powder coated aluminium double clear glazed 2100mm high sliding doors with keyed locks.

Flyscreens to all openable windows – aluminium framed with aluminium mesh.

Roller blackout blinds to living area windows & sliding doors, bedrooms & wet area windows. Excludes entry sidelights, splashback windows & stair void windows. Installation to be reveal mounted wherever possible, however will be at the discretion of the supplier/installer subject to design constraints.

External Doors

Hume front entry door – colour and finish design specific.

Hume SCX1 Flush panel door with painted finish to garage internal access – 920mm wide x 2040mm high.

Gainsborough Bela entrance lever lockset with single cylinder keyed lock to all external doors. Refer to colour documents for colour & finish.

Car Accommodation

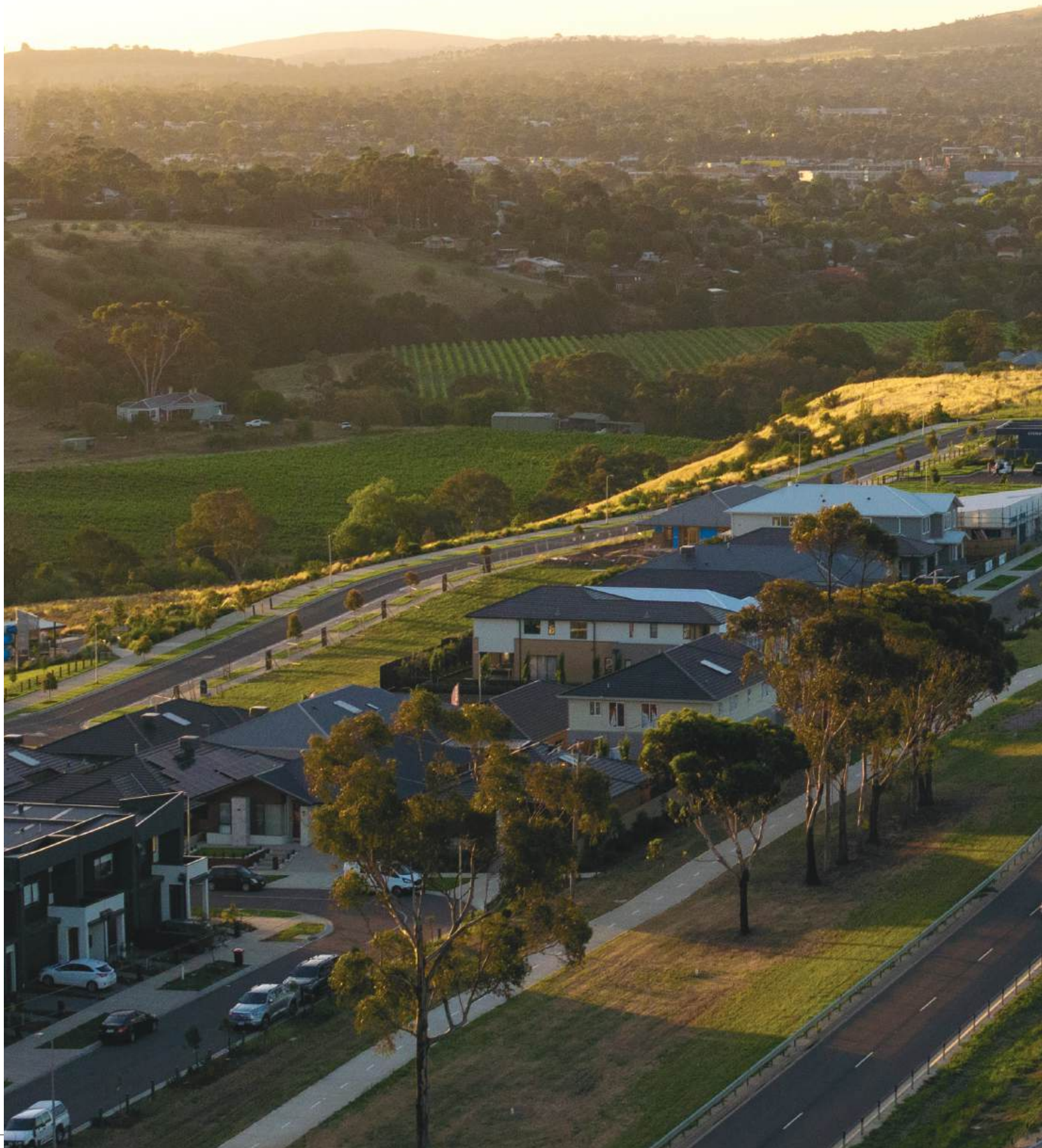
Sectional front garage door with colorbond finish – flatline or similar profile.

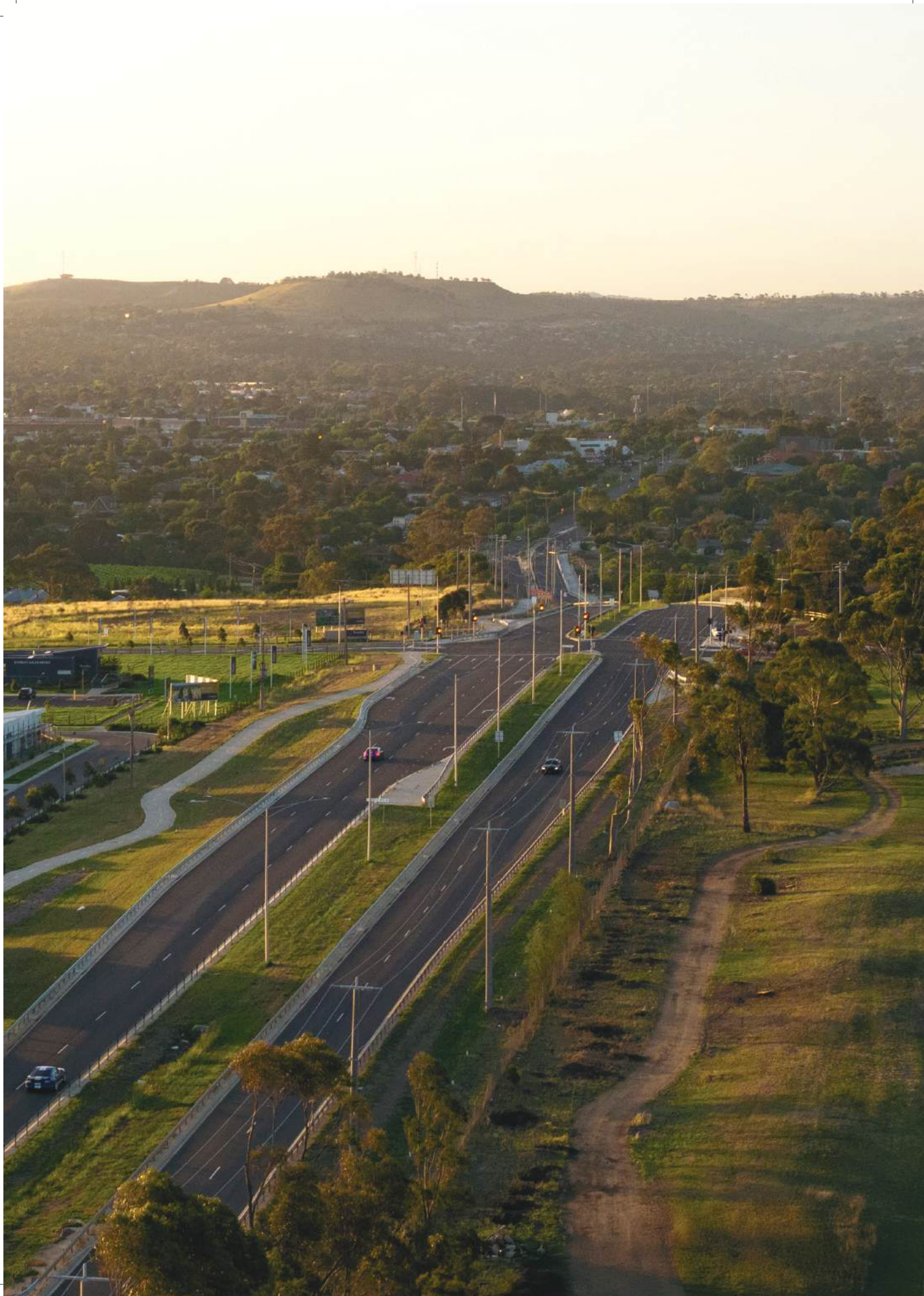
Remote motorised front garage door opener with 2No key fobs & 1No wall button.

Plaster & Painting

75mm cove cornice to all internal rooms, including garage.

Premium 2 coat wall & 2 coat ceiling paint system.







Symphony

COLLECTION

Everley
SUNBURY



Everley Sales Office

1 Tanninbrae Drive, Sunbury VIC 3429
Open 7 days, 11am – 5pm

Contact

Edward Seychell – Estate Manager
0499 949 748 | everleysunbury@rpmgrp.com.au

This brochure is intended to provide general information only and does not constitute an offer to supply. Sienna Homes reserves the right to substitute a product with an equivalent product due to supply issues, agreements or availability. All photographs, plans, maps, and drawings are illustrative only, may show upgrade items and may not be to scale. Lot size dimensions, easements, landscape treatments, final road layout, public utility and service infrastructure locations and zoning are subject to change and conditional on authority approval. Prospective buyers should make and rely on their own enquiries, refer to their contract for full terms and conditions, and obtain independent advice including legal and financial advice. CDB-U 49207