

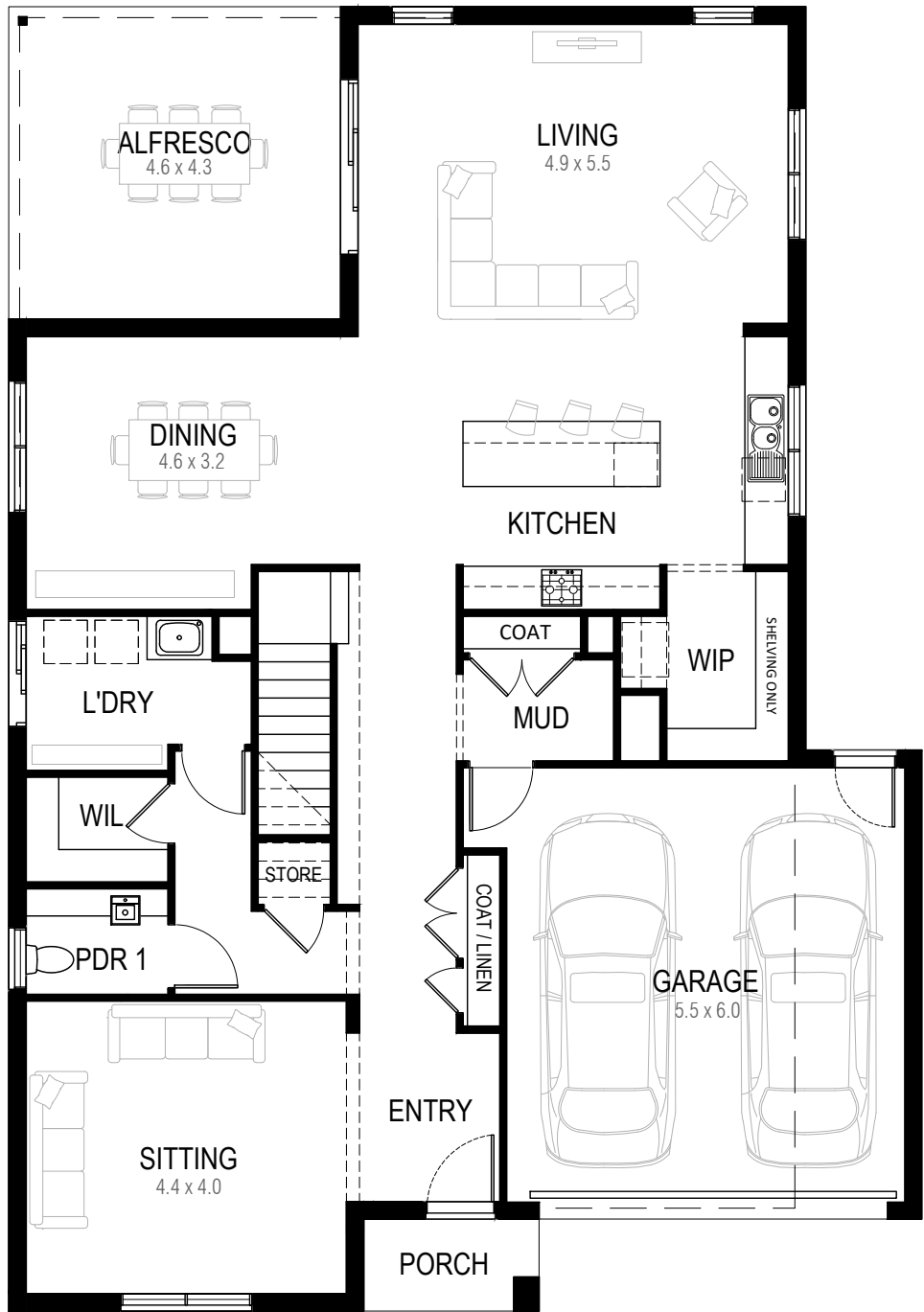
CAMDEN 42



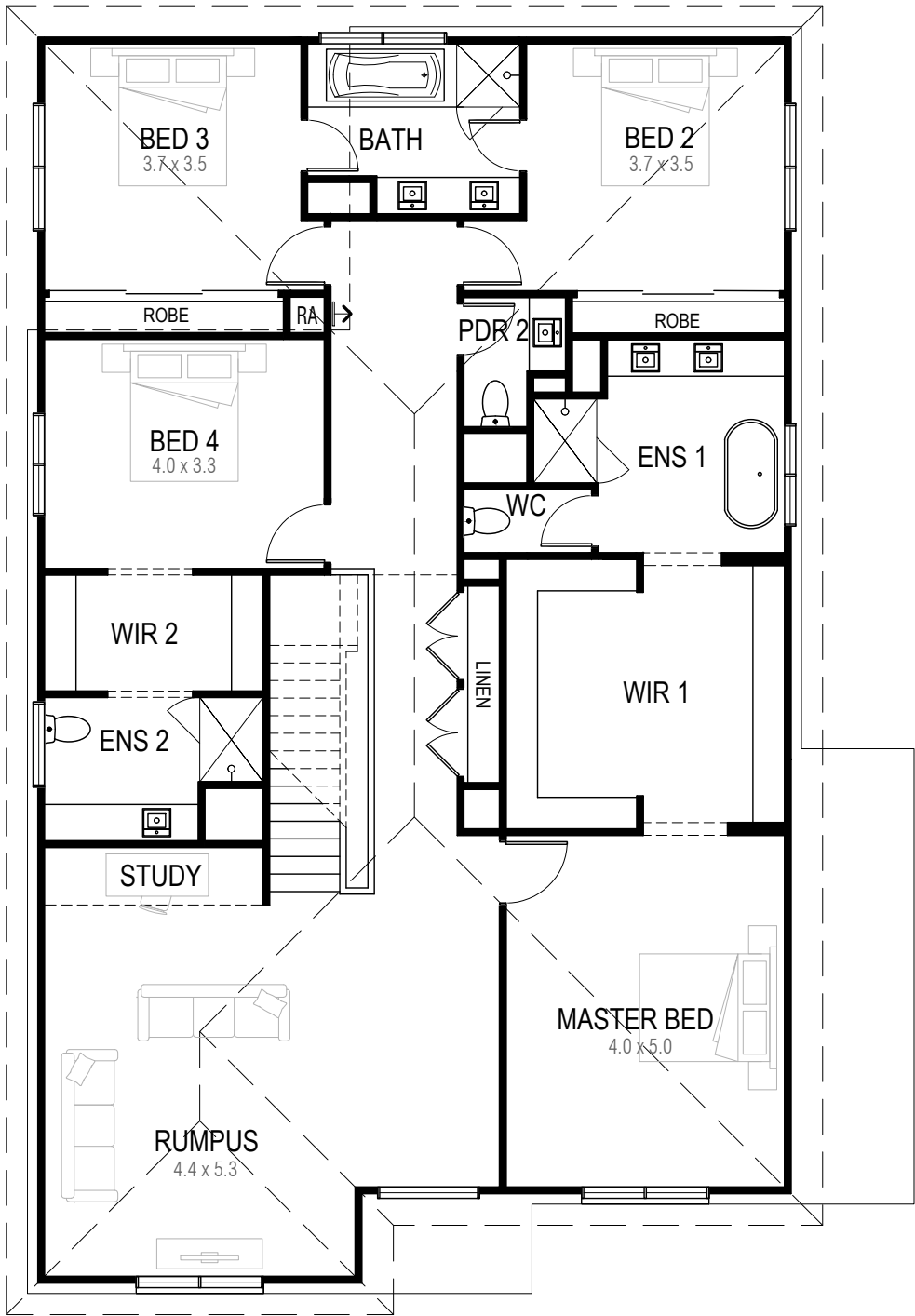
AREAS:			
GROUND FLOOR:	144.1 m ²	GARAGE:	36.7 m ²
FIRST FLOOR:	181.6 m ²	ALFRESCO:	19.7 m ²
	0.0 m ²	PORCH:	3.1 m ²
	0.0 m ²		0.0 m ²
SUB TOTAL:	325.8 m ²	TOTAL:	385.3 m ²
	35.1 sq		41.5 sq

Total House Length	18.0 m
Total House Width	12.6 m
Minimum Block Size*	14.6 x 25.0m

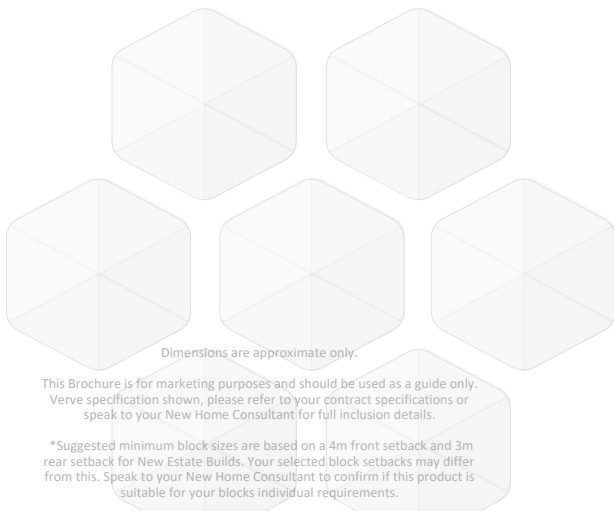
NCC 2022 SUITABLE



GROUND FLOOR



FIRST FLOOR



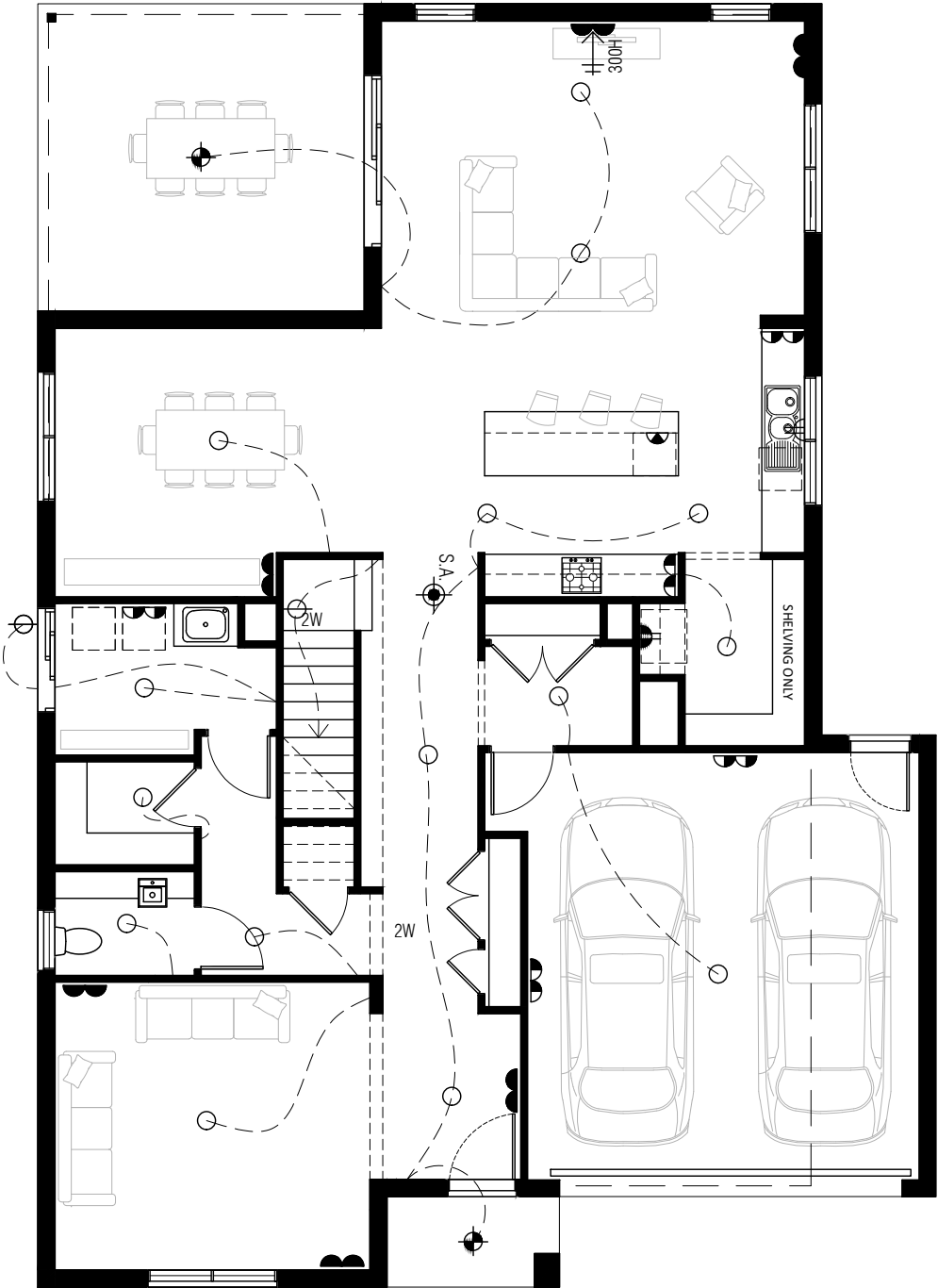
Dimensions are approximate only.
This Brochure is for marketing purposes and should be used as a guide only.
Verve specification shown, please refer to your contract specifications or
speak to your New Home Consultant for full inclusion details.

*Suggested minimum block sizes are based on a 4m front setback and 3m
rear setback for New Estate Builds. Your selected block setbacks may differ
from this. Speak to your New Home Consultant to confirm if this product is
suitable for your blocks individual requirements.

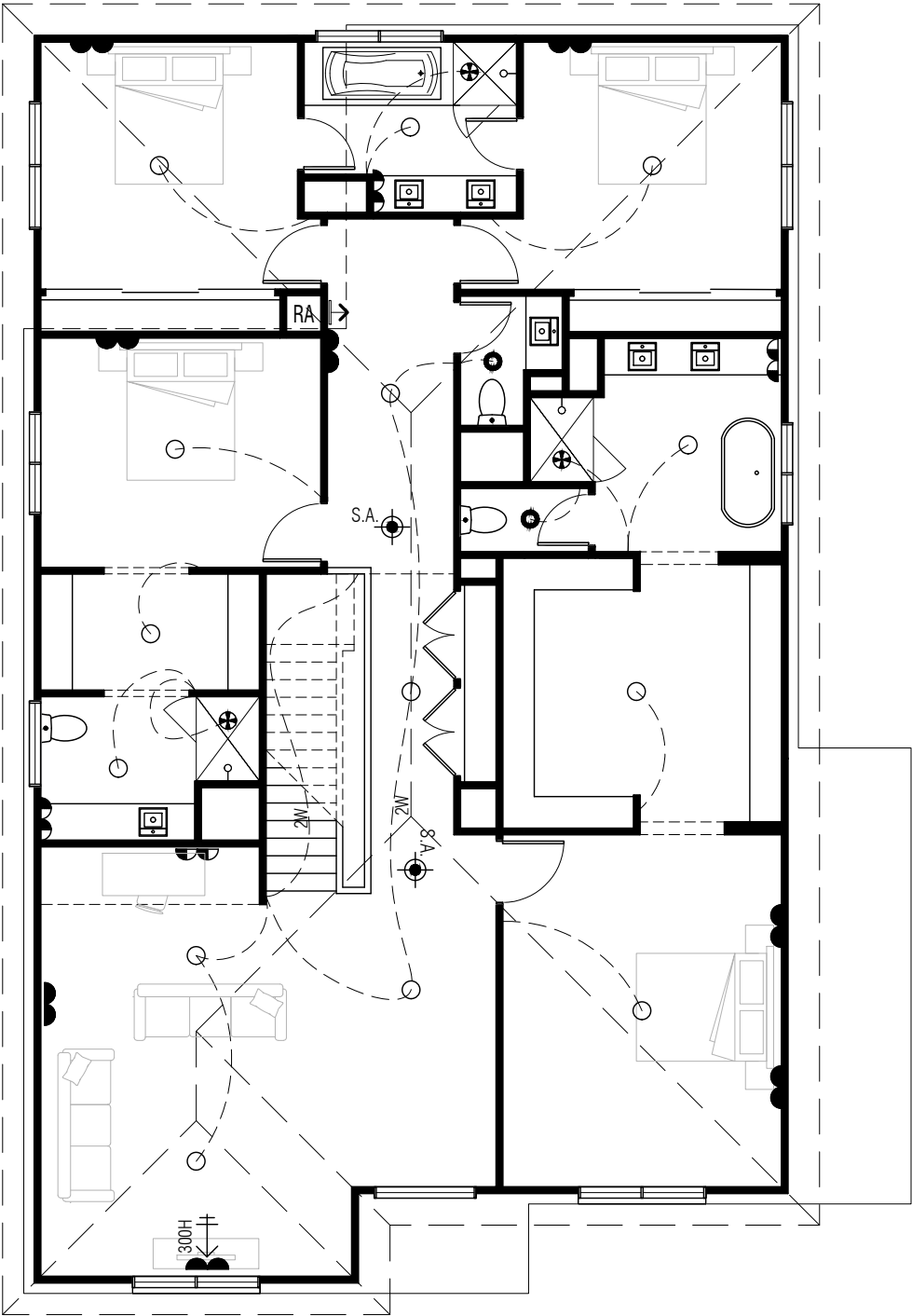
Sienna Building Pty Ltd - ABN 66 128 617 532 owns Copyright of this design
any reproduction in whole or part without consent is forbidden. Sienna
Building Pty Ltd reserves the right to amend product design, specifications
and pricing without notice.

ISSUE DATE: APRIL 2023

www.siennahomes.com.au



GROUND FLOOR



FIRST FLOOR

LIGHTING & FITTINGS			
	CEILING LIGHT OUTLET WITH ACRYLIC SHADE.		
	PENDANT LIGHT AS SPEC.		
	CEILING LIGHT WITH SPEC. FITTING.		
	LED (FIXED) DOWNLIGHT.		
	WALL LIGHT AS SPEC..		PARAFLOOD WITH SENSOR.
	STAIR LIGHT		LED STRIP LIGHT
	DOUBLE PARAFLOOD LIGHT WITH SENSOR.		
	1200 FLURO.		JUNCTION BOX (IN CEILING)
	MOTION SENSOR.		DAYLIGHT SENSOR.
	EXHAUST FAN (SELF SEALING). <small>INSTALLED AS PER B.C.A. 3.8.5. & TO COMPLY WITH A.S.1668.2.</small>		
	COMBINATION EXHAUST FAN & LIGHT.		
	DIMMER SWITCH TO FITTING AS WIRED.		
	TWO WAY SWITCHING TO FITTING AS WIRED.		
POWER			
	DOUBLE POWER POINT @ 300MM. <small>UNLESS NOTED OTHERWISE</small>		
	SINGLE POWER POINT @ 750MM.		
	DOUBLE POWER POINT @ 1150MM.		
	DOUBLE POWER POINT @ 1400MM.		
	SGL WEATHER PROOF P.POINT @ 1150MM.		
	DOUBLE WEATHER PROOF P.POINT @ 1150MM.		
	SGL P.POINT @ 600MM ON SEP. CIRCUIT.		
	SGL P.POINT TO CEIL-REMOTE CONT. UNIT		
	SINGLE POWER POINT @ 1800MM.		
OTHER			
	SMOKE DETECTOR. <small>APPROX. POSITION INSTALLED AS PER B.C.A. 3.7.2. & TO COMPLY WITH A.S.3786.</small>		
	GAS BAYONET POINT @ 450mm		
	EXTERNAL METER BOX.		INTERNAL SWITCHBOARD.
	HOT WATER UNIT AS SPECIFIED		SOLAR HOT WATER UNIT AS SPECIFIED
	ROOF ACCESS (450 x 600mm)		
SECURITY & COMMUNICATIONS			
	SPEAKER (IN CEILING)		ELECTRICAL CONDUIT
	TV POINT @ SPECIFIED HEIGHT		
	TELEPHONE POINT TO MATCH ADJOINING POWER POINT HEIGHT		
	MULTIMEDIA POINT TO MATCH ADJOINING POWER POINT HEIGHT		
	TERMINATION BOX		DISTRIBUTION HUB BOX
ALARM			
	ALARM KEYPAD		ALARM STROBE & SIREN
	ALARM CONTROL PANEL W/- SINGLE GPO @ 2200MM AFL		
	ALARM SENSOR (TYPICALLY WALL MOUNTED)		
HEATING & COOLING			
	CEILING REGISTER (HEATING ONLY)		GAS DUCTED HEATING UNIT
	CEILING REGISTER (COOLING ONLY)		EVAP. COOLER UNIT
	ELECTRIC WALL HEATING PANEL		
	RETURN AIR (WALL MOUNTED)		RETURN AIR (CEILING MOUNTED)
	AIR CONDITIONER HEAD		AIR CONDITIONER CONDENSER
	CEILING FAN WITHOUT LIGHT FITTING		CEILING FAN WITH LIGHT FITTING
NOTE: HEATING & COOLING REGISTERS INDICATED ON PLAN ARE SYMBOLIC ONLY. ACTUAL REGISTERS SHAPE & LOCATION PER MANUFACTURES RECOMENDATIONS.			
IMPORTANT:			
- PROVIDE LIGHT POINT & SINGLE G.P.O. IN ROOF SPACE			
- WHERE INSTALLED, PROVIDE DIRECT POWER OUTLETS TO COOK TOP, RANGEHOOD, UNDER BENCH OVEN.			