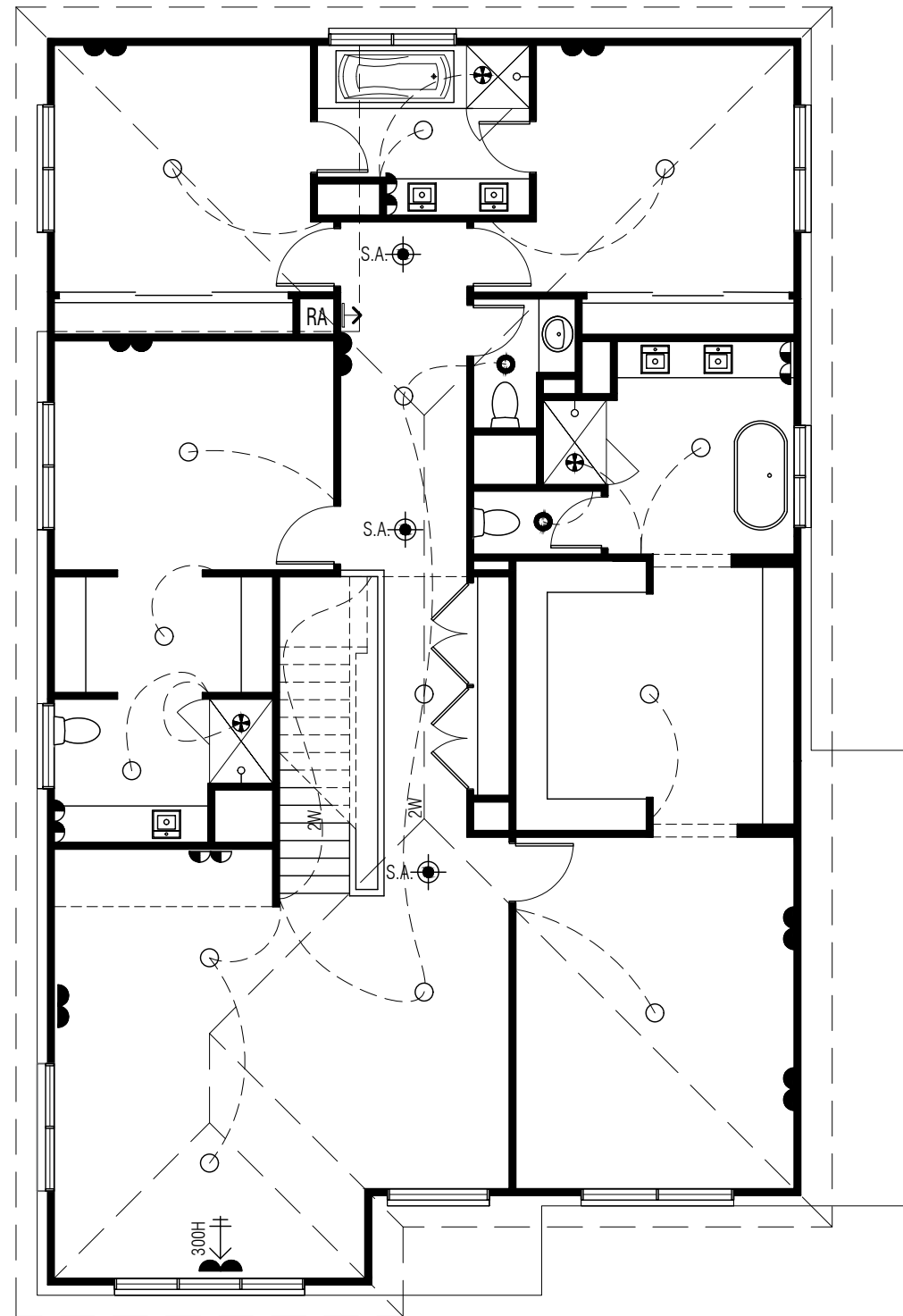
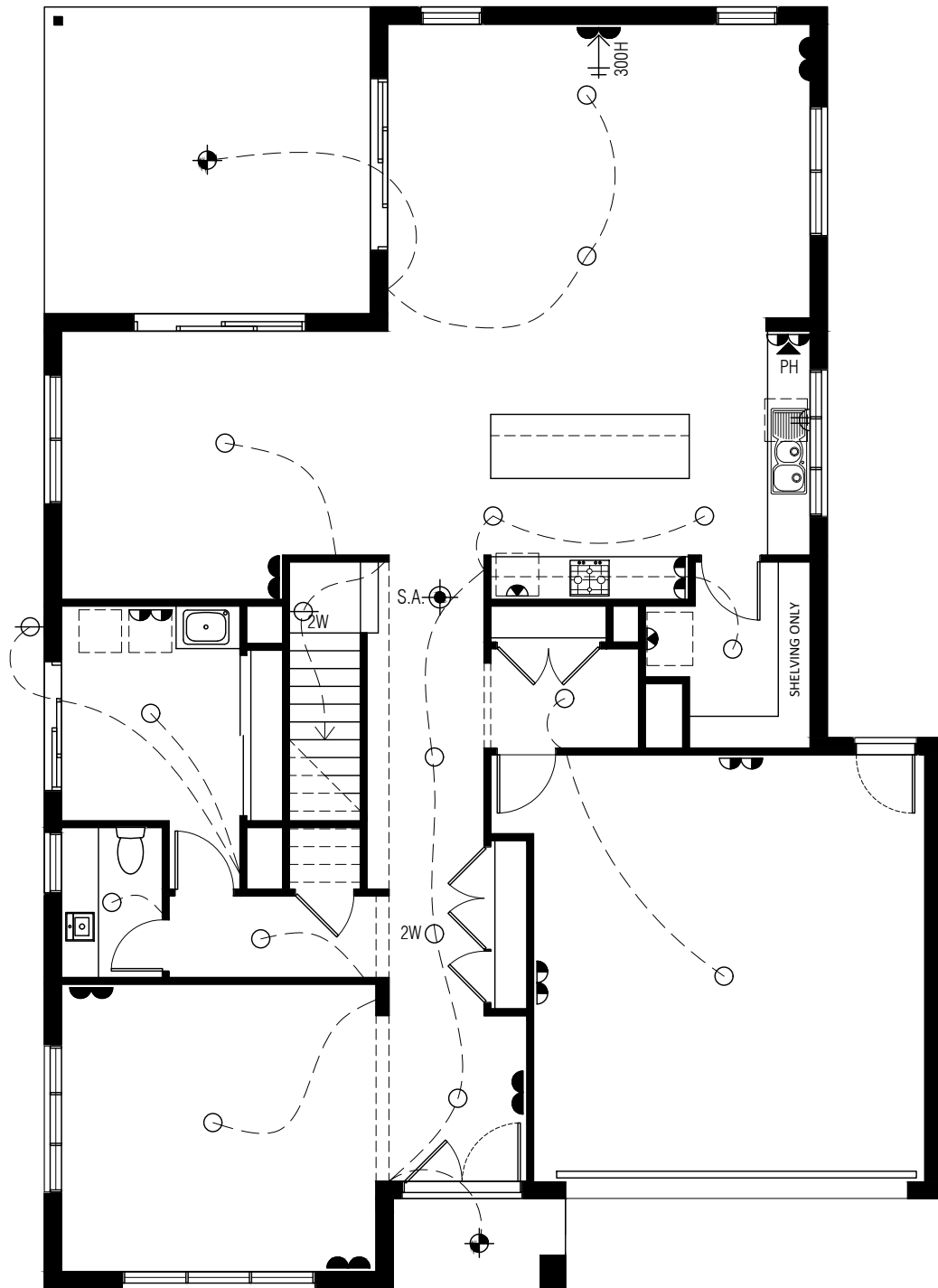




# CAMDEN 42



LIGHTING & FITTINGS			
○	CEILING LIGHT OUTLET WITH ACRYLIC SHADE.		
⊕	PENDANT LIGHT AS SPEC.		
●	CEILING LIGHT WITH SPEC. FITTING.		
⊕	LED (FIXED) DOWNLIGHT.		
⊕	WALL LIGHT AS SPEC..	⊕	PARAFLOOD WITH SENSOR.
ST	STAIR LIGHT		
⊕	DOUBLE PARAFLOOD LIGHT WITH SENSOR.		
1200 FLURO.		JB	JUNCTION BOX (IN CEILING)
⊕	MOTION SENSOR.	<DLS	DAYLIGHT SENSOR.
⊕	EXHAUST FAN (SELF SEALING).	INSTALLED AS PER B.C.A. 3.8.5. & TO COMPLY WITH A.S.1668.2.	
⊕	COMBINATION EXHAUST FAN & LIGHT.		
DIM	DIMMER SWITCH TO FITTING AS WIRED.		
2W	TWO WAY SWITCHING TO FITTING AS WIRED.		
POWER			
⊕	DOUBLE POWER POINT @ 300MM.	UNLESS NOTED OTHERWISE	
⊕	SINGLE POWER POINT @ 750MM.		
⊕	DOUBLE POWER POINT @ 1150MM.		
WP	SGL WEATHER PROOF P.POINT @ 1150MM.		
WP	DOUBLE WEATHER PROOF P.POINT @ 1150MM.		
⊕	SGL P.POINT @ 600MM ON SEP. CIRCUIT.		
⊕	SGL P.POINT TO CEIL-REMOTE CONT. UNIT		
OTHER			
S.A.	SMOKE DETECTOR.	APPROX. POSITION INSTALLED AS PER B.C.A. 3.7.2. & TO COMPLY WITH A.S.3786.	
GP	GAS BAYONET POINT @ 450mm		
M/B	EXTERNAL METER BOX.	S/B	INTERNAL SWITCHBOARD.
HWU	HOT WATER UNIT AS SPECIFIED	HWU	SOLAR HOT WATER UNIT AS SPECIFIED
MH	ROOF ACCESS		
SECURITY & COMMUNICATIONS			
⊕	SPEAKER (IN CEILING)	CONDUIT	ELECTRICAL CONDUIT
300H	TV POINT @ SPECIFIED HEIGHT		
PH	TELEPHONE POINT TO MATCH ADJOINING POWER POINT HEIGHT		
MMP	MULTIMEDIA POINT TO MATCH ADJOINING POWER POINT HEIGHT		
T-BOX	TERMINATION BOX	D-HUB	DISTRIBUTION HUB BOX
ALARM			
K	ALARM KEYPAD	AS	ALARM STROBE & SIREN
ACP	ALARM CONTROL PANEL W/- SINGLE GPO @ 2200MM AFL		
S	ALARM SENSOR (TYPICALLY WALL MOUNTED)		
HEATING & COOLING			
⊕	CEILING REGISTER (HEATING ONLY)	HTR	GAS DUCTED HEATING UNIT
⊕	CEILING REGISTER (COOLING ONLY)	ECU	EVAP. COOLER UNIT
RA	RETURN AIR (WALL MOUNTED)	RA	RETURN AIR (CEILING MOUNTED)
AC-HEAD	AIR CONDITIONER HEAD	AC-CON	AIR CONDITIONER CONDENSER
⊕	CEILING FAN WITHOUT LIGHT FITTING	⊕	CEILING FAN WITH LIGHT FITTING
NOTE: HEATING & COOLING REGISTERS INDICATED ON PLAN ARE SYMBOLIC ONLY. ACTUAL REGISTERS SHAPE & LOCATION PER MANUFACTURES RECOMENDATIONS.			
DUCTED VACUUM			
DVS	DUCTED VACUUM SYSTEM @1500MM APPROX.	DVP	DUCTED VACUUM POINT @300MM
		KO.	DUCTED VACUUM KICKBOARD OUTLET (REFER INTERNALS FOR POSITION)
<b>IMPORTANT:</b>			
- PROVIDE LIGHT POINT & SINGLE G.P.O. IN ROOF SPACE			
- WHERE INSTALLED, PROVIDE DIRECT POWER OUTLETS TO COOK TOP, RANGEHOOD, UNDER BENCH OVEN.			