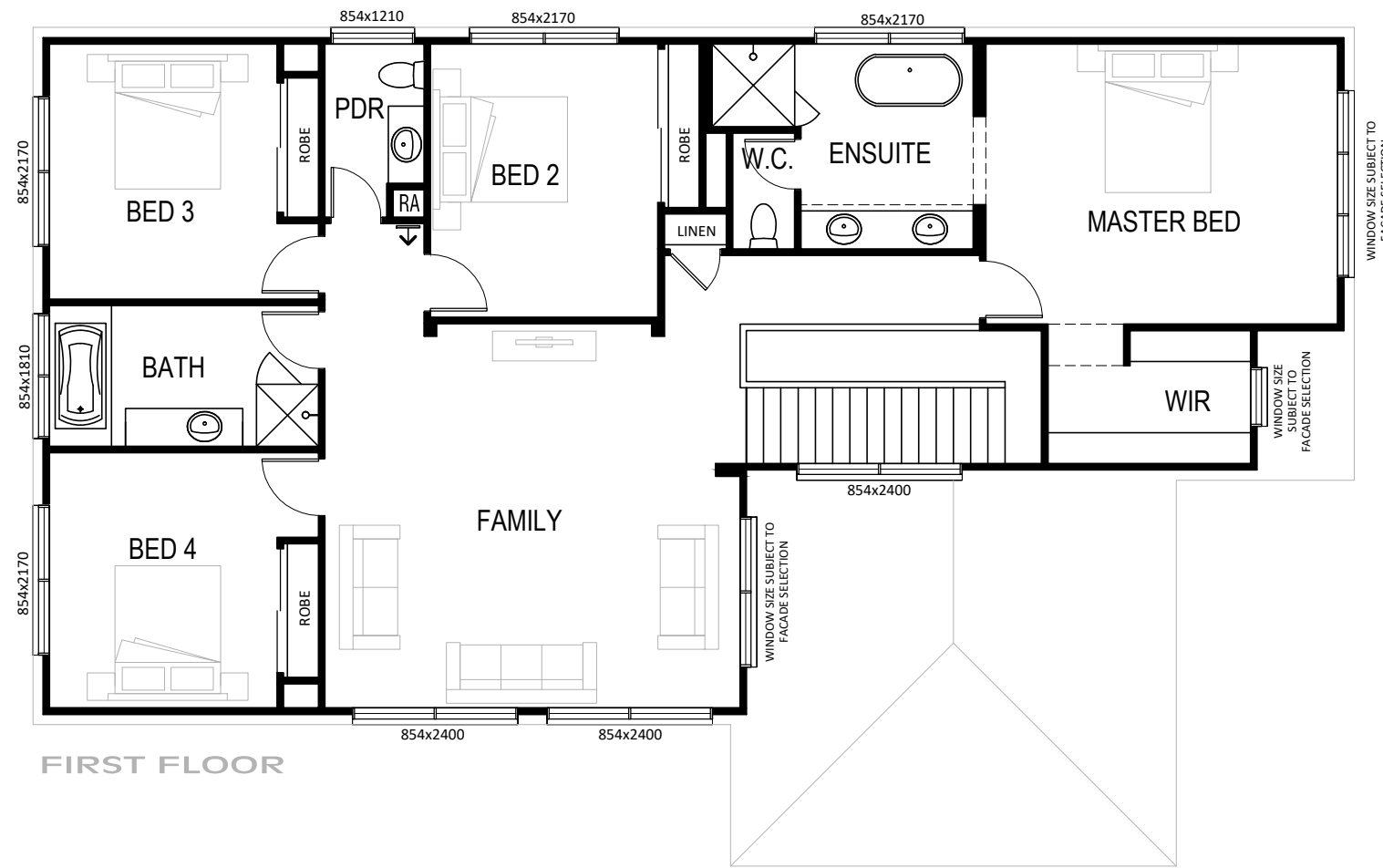


# ASPEN 38

5 3.5 2



|               |           |
|---------------|-----------|
| Master Bed    | 5.1 x 4.0 |
| Bedroom 2     | 3.3 x 4.0 |
| Bedroom 3     | 3.3 x 3.7 |
| Bedroom 4     | 3.3 x 3.7 |
| Guest Bedroom | 3.4 x 3.5 |
| Living        | 5.7 x 5.5 |
| Dining        | 3.5 x 4.7 |
| Theatre       | 4.2 x 4.1 |
| Alfresco      | 2.9 x 2.8 |
| Garage        | 6.0 x 5.5 |



| AREAS:        |                      |           |                      |
|---------------|----------------------|-----------|----------------------|
| GROUND FLOOR: | 149.0 m <sup>2</sup> | GARAGE:   | 37.2 m <sup>2</sup>  |
| FIRST FLOOR:  | 151.5 m <sup>2</sup> | PORCH:    | 6.1 m <sup>2</sup>   |
|               | 0.0 m <sup>2</sup>   | ALFRESCO: | 8.7 m <sup>2</sup>   |
|               | 0.0 m <sup>2</sup>   |           | 0.0 m <sup>2</sup>   |
| SUB TOTAL:    | 300.5 m <sup>2</sup> | TOTAL:    | 352.5 m <sup>2</sup> |
|               | 32.3 sq              |           | 37.9 sq              |

|                                |         |
|--------------------------------|---------|
| Total House Length (Ex. Porch) | 19.15 m |
| Total House Width              | 12.15 m |
| Minimum Lot Width              | 14.00 m |

Dimensions are approximate only.



[WWW.SIENNAHOMES.COM.AU](http://WWW.SIENNAHOMES.COM.AU)

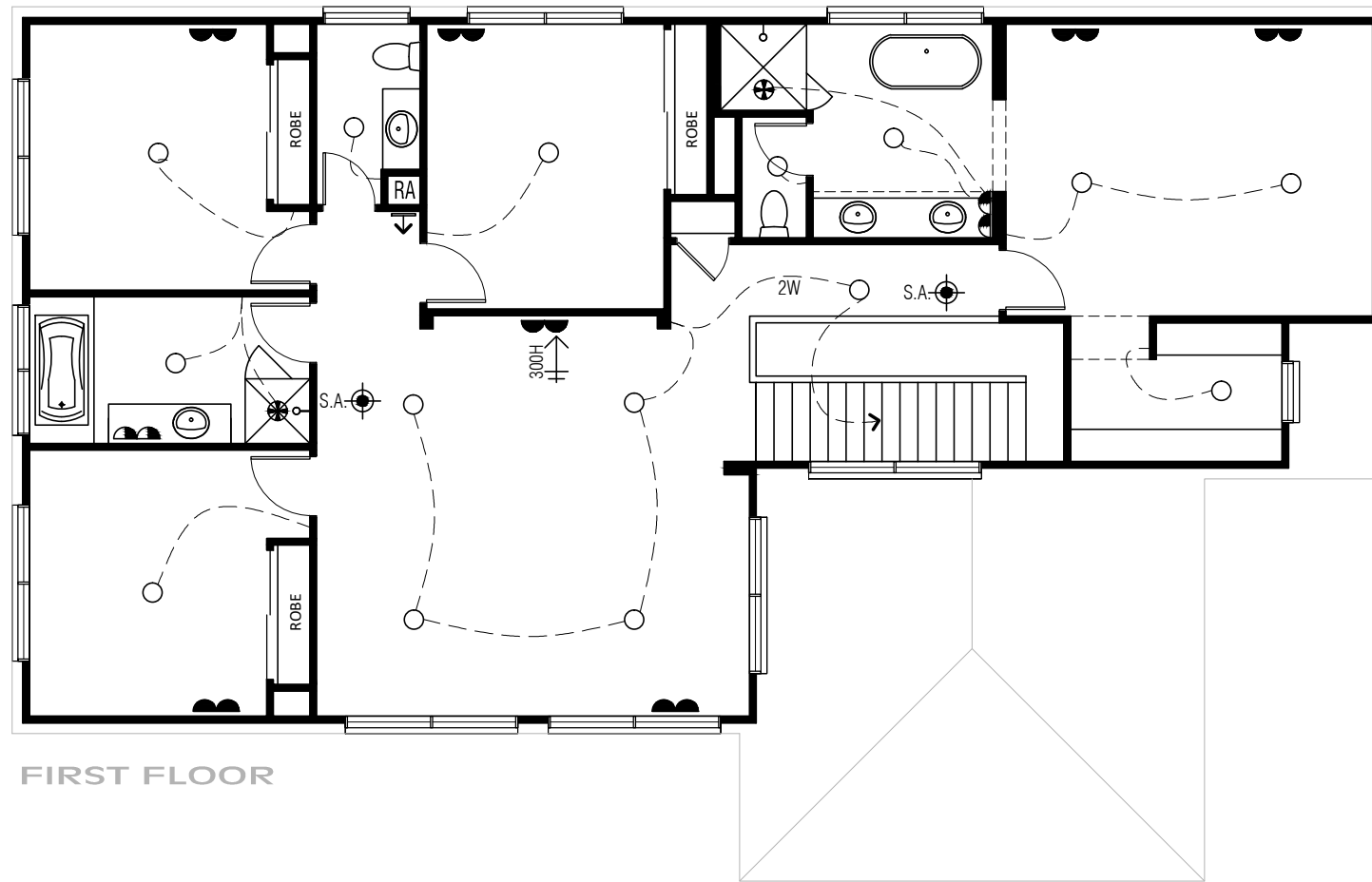
Sienna Building Pty Ltd - ABN 66 128 617 532 owns Copyright of this design any reproduction in whole or part without consent is forbidden.

This Brochure is for marketing purposes only and should be used as a guide only. Verve specification shown, please refer to your contract specifications or speak to your Sales Consultants for full inclusion details.

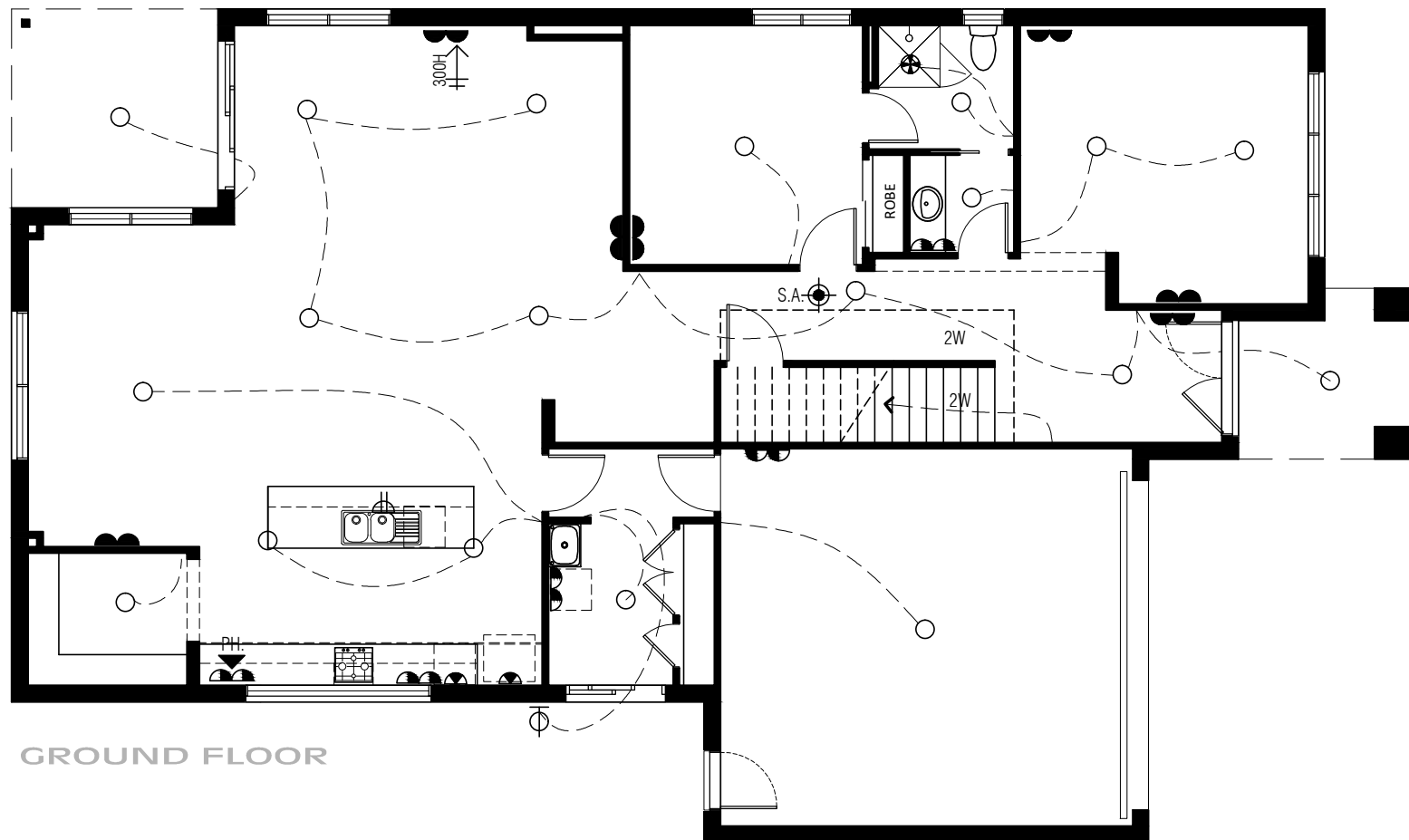
Sienna Building Pty Ltd reserves the right to amend product design, specifications and pricing without notice.

ISSUE DATE: JAN 2018

# ASPEN 38



FIRST FLOOR



GROUND FLOOR

Sienna Building Pty Ltd - ABN 66 128 617 532 owns Copyright of this design any reproduction in whole or part without consent is forbidden.

This Brochure is for marketing purposes only and should be used as a guide only. Verve specification shown, please refer to your contract specifications or speak to your Sales Consultants for full inclusion details.

Sienna Building Pty Ltd reserves the right to amend product design, specifications and pricing without notice.

ISSUE DATE: JAN 2018

| LIGHTING & FITTINGS   |  |  |   |
|---|--|--|---|
|   | CEILING LIGHT OUTLET WITH ACRYLIC SHADE.               |  |   |
|   | PENDANT LIGHT AS SPEC.                                 |  |   |
|   | CEILING LIGHT WITH SPEC. FITTING.                      |  |   |
|   | LED (FIXED) DOWNLIGHT.                                 |  |   |
|   | WALL LIGHT AS SPEC..                                   |  | PARAFLOOD WITH SENSOR.  |
|   | STAIR LIGHT  |  |   |
|   | DOUBLE PARAFLOOD LIGHT WITH SENSOR.                    |  |   |
|   | 1200 FLURO.  |  | JUNCTION BOX (IN CEILING)                                     |
|   | MOTION SENSOR.   |  | DAYLIGHT SENSOR.  |
|   | EXHAUST FAN (SELF SEALING).                            | INSTALLED AS PER B.C.A. 3.8.5. & TO COMPLY WITH A.S.1868.2                 |   |
|   | COMBINATION EXHAUST FAN & LIGHT.                       |  |   |
|   | DIMMER SWITCH TO FITTING AS WIRED.                     |  |   |
|   | TWO WAY SWITCHING TO FITTING AS WIRED.                 |  |   |
| POWER   |  |  |   |
|   | DOUBLE POWER POINT @ 300MM.                            | UNLESS NOTED OTHERWISE   |   |
|   | SINGLE POWER POINT @ 750MM.                            |  |   |
|   | DOUBLE POWER POINT @ 1150MM.                           |  |   |
|   | SGL WEATHER PROOF P.POINT @ 1150MM.                    |  |   |
|   | DOUBLE WEATHER PROOF P.POINT @ 1150MM.                 |  |   |
|   | SGL P.POINT @ 600MM ON SEP. CIRCUIT.                   |  |   |
|   | SGL P.POINT TO CEIL-REMOTE CONT. UNIT                  |  |   |
| OTHER   |  |  |   |
|   | S.M.O.K.E. DETECTOR.                                   | APPROX. POSITION INSTALLED AS PER B.C.A. 3.7.2. & TO COMPLY WITH A.S.3786. |   |
|   | GAS BAYONET POINT @ 450mm                              |  |   |
|   | EXTERNAL METER BOX.                                    |  | INTERNAL SWITCHBOARD.   |
|   | HOT WATER UNIT AS SPECIFIED                            |  | SOLAR HOT WATER UNIT AS SPECIFIED                             |
|   | ROOF ACCESS  |  |   |
| SECURITY & COMMUNICATIONS   |  |  |   |
|   | SPEAKER (IN CEILING)                                   |  | ELECTRICAL CONDUIT  |
|   | TV POINT @ SPECIFIED HEIGHT                            |  |   |
|   | TELEPHONE POINT TO MATCH ADJOINING POWER POINT HEIGHT  |  |   |
|   | MULTIMEDIA POINT TO MATCH ADJOINING POWER POINT HEIGHT |  |   |
|   | TERMINATION BOX  |  | DISTRIBUTION HUB BOX  |
| ALARM   |  |  |   |
|   | ALARM KEYPAD   |  | ALARM STROBE & SIREN  |
|   | ALARM CONTROL PANEL W/- SINGLE G.P.O. @ 2200MM AFL     |  |   |
|   | ALARM SENSOR (TYPICALLY WALL MOUNTED)                  |  |   |
| HEATING & COOLING   |  |  |   |
|   | CEILING REGISTER (HEATING ONLY)                        |  | GAS DUCTED HEATING UNIT                                       |
|   | CEILING REGISTER (COOLING ONLY)                        |  | EVAP. COOLER UNIT   |
|   | RETURN AIR (WALL MOUNTED)                              |  | RETURN AIR (CEILING MOUNTED)                                  |
|   | AIR CONDITIONER HEAD                                   |  | AIR CONDITIONER CONDENSER                                     |
|   | CEILING FAN WITHOUT LIGHT FITTING                      |  | CEILING FAN WITH LIGHT FITTING                                |
| NOTE: HEATING & COOLING REGISTERS INDICATED ON PLAN ARE SYMBOLIC ONLY. ACTUAL REGISTERS SHAPE & LOCATION PER MANUFACTURES RECOMENDATIONS. |  |  |   |
| DUCTED VACUUM   |  |  |   |
|   | DUCTED VACUUM SYSTEM @1500MM APPROX.                   |  | DUCTED VACUUM POINT @300MM                                    |
|   |  |  | DUCTED VACUUM KICKBOARD OUTLET (REFER INTERNALS FOR POSITION) |
| IMPORTANT:  |  |  |   |
| - PROVIDE LIGHT POINT & SINGLE G.P.O. IN ROOF SPACE   |  |  |   |
| - WHERE INSTALLED, PROVIDE DIRECT POWER OUTLETS TO COOK TOP, RANGEHOOD, UNDER BENCH OVEN.   |  |  |   |